

# AXIS Camera Station

*Flexible surveillance software for your Axis network video products*

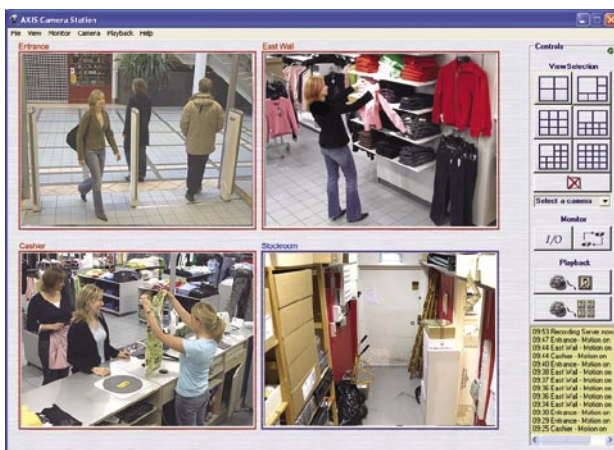
With the AXIS Camera Station installed on your Windows PC, you can monitor your cameras, and at the same time, record high quality, digital video either continuously or on schedule, alarm and/or motion detection. Application and camera based motion detection and intelligent, differentiated day and night settings optimize trigger levels. This reduces false alarms and improves sensitivity for event detection. Recorded incidents can easily be found for immediate action and multi-view playback displays the incident timeframe.

Prevent shoplifting, secure your car park or schoolyard and monitor the back door – just a few examples that can make your investment pay off quickly.

AXIS Camera Station is specially designed to be used with Axis video products and delivers superior results on a Windows PC. It offers stable operations and scalability with easy addition of camera licenses, and includes a free Web interface and Windows client for remote control.



- View and record live video from multiple cameras at a remote location
- Record continuously, on alarm or on motion detection
- High-quality recordings
- No recording limitation in software
- Full duplex audio communication
- Multilingual user interface



## Specifications

Compatibility	Compatible with Axis 2xx series network video products running firmware 4.03 or higher and 2xxx series running firmware 2.34 or higher. See <a href="http://www.axis.com">www.axis.com</a> for a full list	Logs	All events, filter per day and camera. User actions
Recording frame rate	Total frame rate > 250 fps on recommended hardware	Languages	English, French, German, Italian, Russian, Spanish
Recording storage	Unlimited recording database, only limited by disk space Duration can be limited per camera to fit local legal requirements. Default 5 days	Installation	Auto search and detection of cameras
Video channels	Up to 25	Licenses	AXIS Camera Station base licenses for 4 or 10 cameras/channels to be used on one single dedicated PC/server. Additional licenses in +1 or +5 up to 25 cameras/channels. One year upgrade license included in 4/10 base license. Future upgrades require one upgrade license per year. 30-days demo can be upgraded to licensed version
Video compression	Recording in Motion JPEG Live view in Motion JPEG or MPEG-2/4	License registration	Registration automatically over Internet otherwise manual via form on <a href="http://www.axis.com">www.axis.com</a> within a five day grace period
Resolutions	Up to 1280x1024 (resolutions depend on the connected Axis video product). Compression levels: 5	Minimum system requirements	Windows XP Professional SP2, 2000 (SP4), 2003 Server (SP1), Internet Explorer 6.0, or later, DirectX 9.0 or later (for MPEG-2/4) TCP/IP support Internet Information Services (IIS) – for Web client. MS .NET runtime environment (incl. in installations package)
Camera live view	Live view of up to 16 cameras simultaneously in 4, 6, 9, 10, 13, 16-split views, full screen 4, 9, 16-split view Single camera pop-up	Minimum hardware requirements for a 4 camera system	Pentium 4, 2 GHz processor, CD-drive 512 MB RAM Hard disk: 1 GB for installation and 2 GB or higher per camera as image database NTFS file system XGA (1024 x 768) or higher resolution monitor AGP graphic card, Direct Draw (for MPEG-2/4), with 32MB or more memory Microsoft mouse or compatible pointing device 100 Mbit Ethernet For additional hardware recommendations, see <a href="http://www.axis.com/techsup">www.axis.com/techsup</a>
Live sequence mode	Multiple camera sequence (patrolling)	Minimum hardware requirements for a 25 camera system	Dual XEON 3 GHz, 1024 MB RAM, multiple SCSI disks 1000 Mbit Ethernet backbone (separate hard disk for OS and recordings)
Audio	Full duplex real time audio support without recording	Recommended hard disk configuration	At 5 fps in CIF up to 10 cameras per hard disk At 25 fps in CIF up to 3-4 cameras per hard disk
PTZ support	Control of PTZ cameras and preset positions	Minimum requirements for AXIS Camera Station Client and remote web access	P4, 1 GHz processor 256 MB RAM XGA (1024 x 768) or higher resolution monitor AGP graphic card, Direct Draw (for MPEG-2/4), with 32MB or more memory Windows XP Professional SP2, 2000 (SP4), 2003 Server (SP1), Internet Explorer 6.0, or later, DirectX 9.0 or later (for MPEG-2/4 viewing) TCP/IP support MS .NET runtime environment for client (included in installations package)
Alarm recording	Events triggered by motion detection, external input or according to a schedule Speeds up recording on motion or on I/O alarm FTP image upload from camera	Supported protocols	IP, HTTP, TCP, ICMP, RTSP, RTP, SMTP, FTP, DNS
Alarm recording frame rate	From 1 image per minute up to 60 fps per camera Configurable pre- and post alarm buffering	Included accessories	Installation Guide in English, French, Italian, German and Spanish, CD with software and User's Manual in English License key
Alarm notification	Visual indication, pop-up live image, email and event log	Applications (included)	AXIS Camera Station Client (for Windows) for remote viewing, playback and administration. AXIS Camera Station Web interface for remote viewing and playback
Motion detection	Advanced motion detection with exclude filter for image areas of no interest. Different day and night settings Camera-based motion detection, option to save on bandwidth "No motion" detection	Accessories (not included)	AXIS Image Enhancer for improved image quality in fog, smoke, rain and snow
Scheduled recordings	Recordings can be scheduled per camera, be set for continuous upload, per weekday or specific dates		
Recording tampering	Warnings on deleted or altered images in recorded events		
Archiving	Recordings can be moved daily to remote storage		
Playback	Controllable speed and play direction		
Synchronized playback	Playback of video synchronized in time from up to 4 video sources simultaneously		
Search for recordings	Search for recordings based on date, time or motion Search for motion in continuous recordings		
Video clip export	Exports single JPEG images to file, printer or email Exports video sequences in AVI format		
System alarm notification	Notification in event log and via email for: alarm, no signal from camera, full hard disk and archiving failure		
Input/output control	Advanced control panel for cameras' digital inputs/outputs		
Remote access	Web client for remote viewing and playback AXIS Camera Station Client (for Windows) included for remote viewing, playback and administration		
Security	Multiple user access levels with password protection Local or Windows domain users (Active directory)		



[www.axis.com](http://www.axis.com)